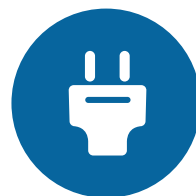


lighTram® 25 TOSA



E-Busway, Nantes

a smart bus system

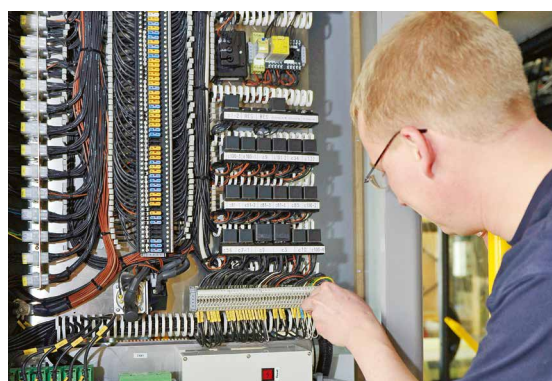
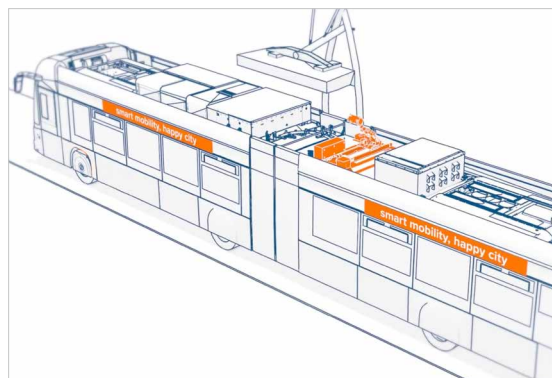


MOTION & EMOTION

HESS

lighTram® 25 TOSA

The HESS-E-Bus system consists of 22 double-articulated buses and fast charging stations along the line. The bus line connects the historical centre of Nantes with the communes situated south of the Loire.



A project of:	Semitan, Nantes Métropole
Line:	4
Length of line:	14 Km
Capacity of line:	+40 000 Passengers per day
Stops:	15
Vehicles:	22 lighTram® 25 TOSA
Total capacity:	149 (4p/m ²) 200 (6p/m ²)
Bus body:	Aluminum System CO-BOLT®
Drive:	Electrical on axles 2+3 Permanent Magnet motors
Heating / Cooling:	100% electrical: convector heating and separate air conditioning for the driver
Driver's area:	Compatible with VDV
Turning radius:	23,8 m
Length, Width, Height:	approx. 24,5 m, 2,55 m, 3,5 m
Maximum speed:	80 km/h
Plug charge:	DFS Mobile, 400 V AC, 22 kVA
Pantograf charge:	Conductive energy supply type TOSA on 13 stations along the line, 600 kVA, 20k/370Veff (Trafo)

